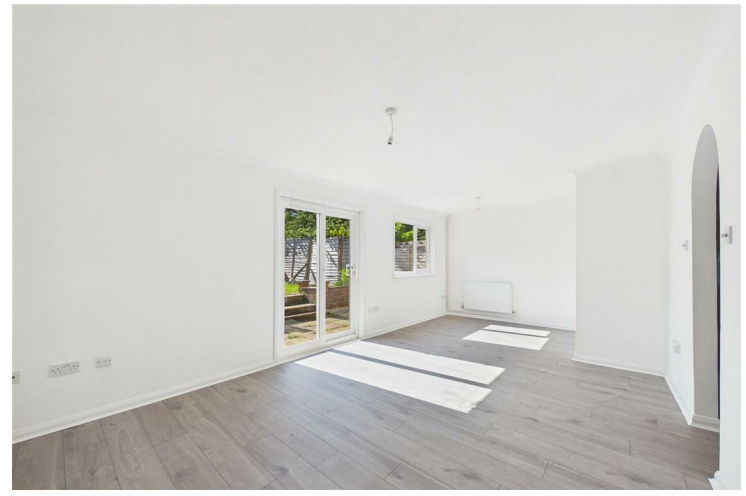




Chopin Road, Basingstoke, RG22 4JN

£325,000 - Freehold



Barons Estate Agents are delighted to present to the market with NO ONWARD CHAIN, this three bedroom mid-terrace family home. The ground floor accommodation comprises of an entrance hallway, WC, a spacious, lounge/dining room and kitchen. Upstairs, there's three well proportioned bedrooms and a modern family bathroom. Externally, there's ample communal parking to the front, and a front garden, and to the rear there's an enclosed garden with a storage cupboard. Additional benefits include gas central heating and double glazing throughout. An early viewing of this ideal family home would be strongly advised by the vendor's sole agent.

Key Points and Features

- NO ONWARD CHAIN
- Spacious Lounge/Dining Room
- Front & Rear Gardens
- 3 Bedrooms
- Kitchen
- Comunal Parking
- Mid Terrace
- WC & Family Bathroom
- Close to Amenities



Energy Efficiency Rating		Current	Potential
Very energy efficient - lower running costs			
(92 plus) A			86
(81-91) B			
(69-80) C		70	
(55-68) D			
(39-54) E			
(21-38) F			
(1-20) G			
Not energy efficient - higher running costs			
England & Wales		EU Directive 2002/91/EC	

Location

Chopin Road is situated to the south/west of the town centre and gives access to junction 6 and 7 of the M3. The mainline railway is within a short drive with a direct link to London Waterloo in 45 minutes. Local shops and retail shopping parks are close to hand along with more extensive shopping in the acclaimed Festival Place with its diverse mix of shops and restaurants. The Anvil and Haymarket Theatres along with the multi screen cinema offer further entertainment.

Tenure

Freehold

Local Authority

Basingstoke & Deane Borough Council

Council Tax Band

Band C

Viewing Arrangements

Viewings are to be arranged via Barons Estate Agents.

Extra Services

Barons Estate Agents will recommend the services of other businesses and may receive a referral fee in some instances where a buyer or seller uses the services of that company.